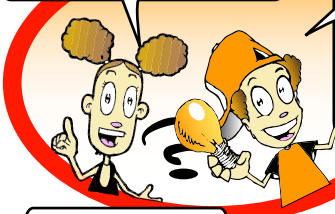


Mateo y Cientina

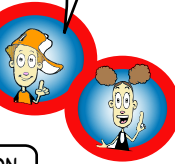
THIS WEEK: MOUNT NOSE

I WONDER WHAT CAUSES DAY AND NIGHT. IT LOOKS LIKE THE SUN GOES AROUND THE EARTH, BUT I HEARD THAT'S NOT TRUE.

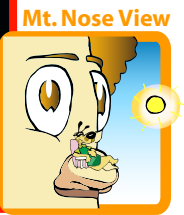


LET'S GO IN A DARK ROOM AND USE A LIGHTBULB TO TRY AND FIGURE IT OUT. THE LIGHTBULB WILL BE THE SUN, AND MY HEAD WILL BE THE EARTH.

I'M GOING TO IMAGINE THAT MY NOSE IS A MOUNTAIN, AND MY FINGER IS A PERSON STANDING ON MY "MT. NOSE."

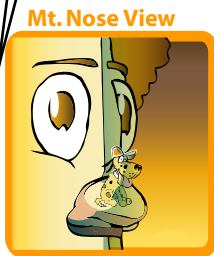


IF I AM FACING THE LIGHTBULB, A PERSON ON MT. NOSE WOULD SEE THE SUN OVERHEAD. IT WOULD BE 12:00 NOON, THE MIDDLE OF THE DAY.



WATCH ME TURN TO THE LEFT 1/4 OF THE WAY AROUND. THAT'S WHEN IT WOULD BE SUNSET.

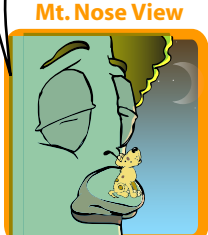
TO THE PERSON STANDING ON MT. NOSE IT WOULD LOOK LIKE THE SUN IS GOING DOWN BEHIND THE EARTH. BUT IT'S THE EARTH THAT'S MOVING!



IF I TURN ONE MORE QUARTER AROUND IT WOULD BE MIDNIGHT FOR THE PERSON ON MT. NOSE.



THE SUN WOULD BE ON THE OTHER SIDE OF THE EARTH. THE DARKNESS OF NIGHT IS CAUSED BY THE EARTH BLOCKING THE SUNLIGHT! YAWN! IT'S MAKING ME SLEEPY TO THINK ABOUT IT!



IF I KEEP TURNING, IT WOULD BE SUNRISE AND THEN NOON AGAIN.

IT'S THE EARTH SPINNING THAT CAUSES NIGHT AND DAY. EVERY TIME WE SPIN ALL THE WAY AROUND, THAT'S ONE DAY.



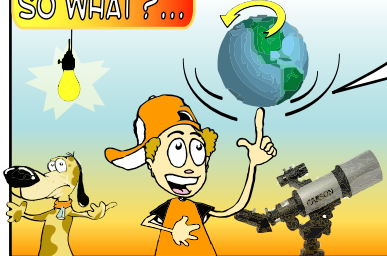
LET'S SEE HOW MANY DAYS I CAN SPIN.

I THINK MY FINGER IS GOING TO GET OFF OF MT. NOSE NOW, BEFORE I GET SICK.

JUST DON'T LET YOUR FINGER GO EXPLORING THE CAVES OF MT. NOSE.



SO WHAT?...



ASTRONOMY IS THE STUDY OF SPACE. ASTRONOMERS USE MODELS, LIKE CIENTINA AND MATEO USED THE LIGHTBULB AND THEIR HEADS, TO REPRESENT THE SUN AND EARTH. MODELS CAN HELP ASTRONOMERS UNDERSTAND HOW THINGS MOVE IN SPACE.



Visit Mateo y Cientina Online! Go to <http://www.mateoycientina.org>